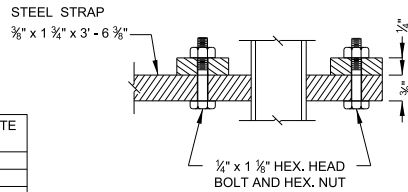
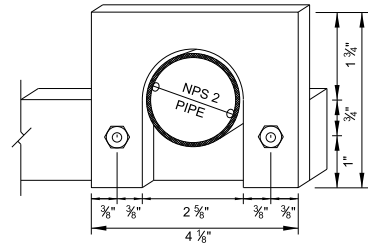


TABLE OF QUANTITIES

PIPE SIZE	H MIN.	CONCRETE CU. YD.	REINF. STEEL LB.	STR. STL. GRATE LB.
18"	3' - 1"	2.89	111	168
24"	3' - 7"	3.12	135	168
30"	4' - 2"	3.38	140	168
36"	4' - 8"	3.59	145	168
42"	5' - 3"	3.83	168	168
48"	5' - 9"	4.03	172	168



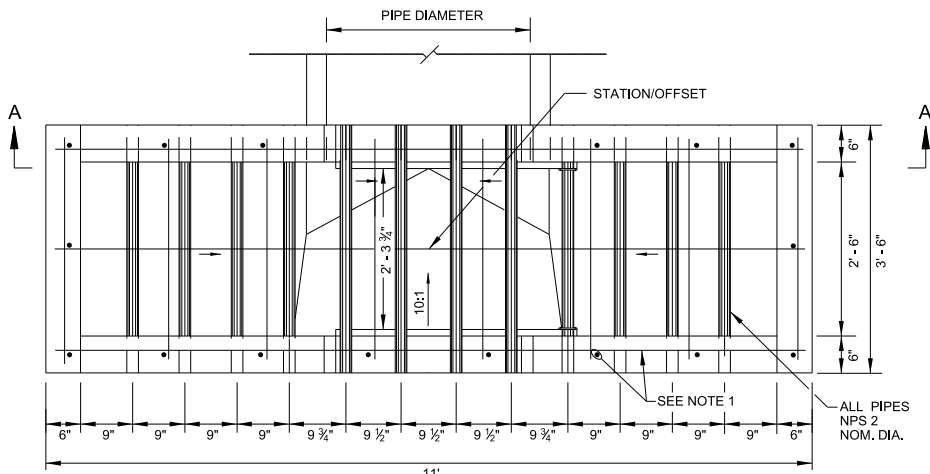
SECTION B-B



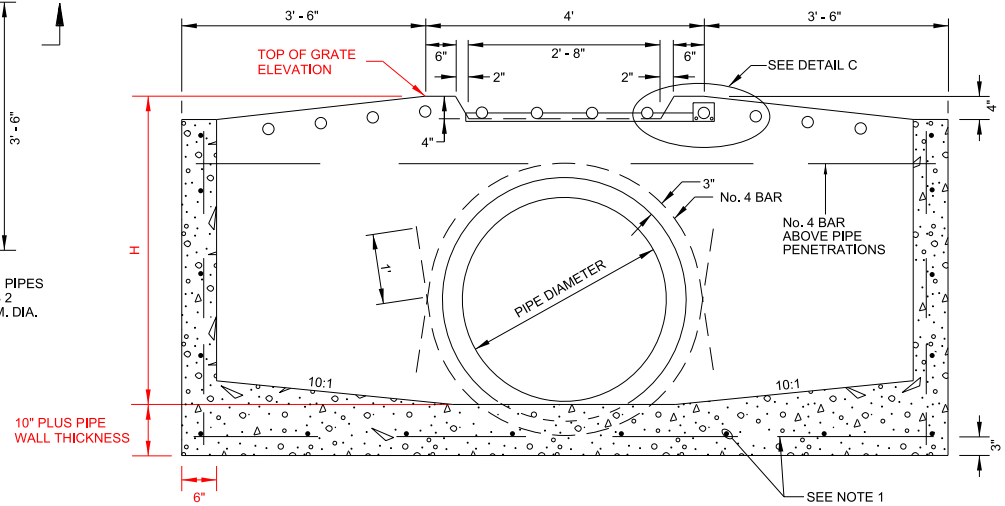
HINGE DETAIL

NOTES:

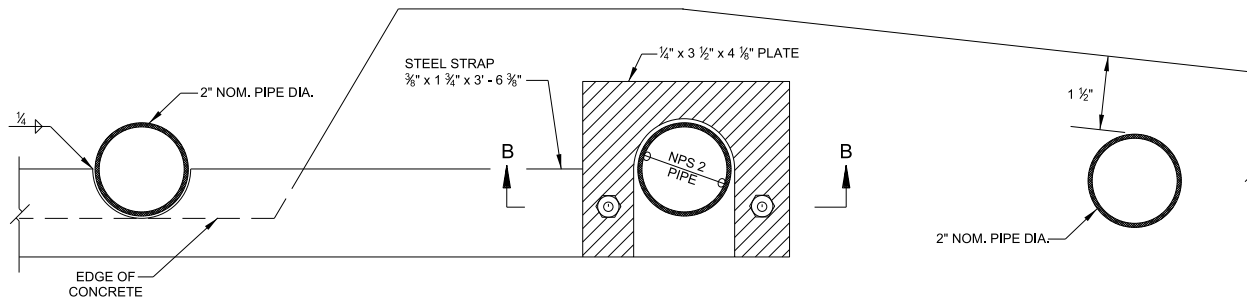
- Reinforcing bars shall be No. 4 bars at 18-inch on center embedded 24 inches clear of concrete surface and wired tightly at all intersections, unless otherwise shown.
- All exposed concrete edges shall be chamfered 1-inch.
- Dimensions may be varied to fit local conditions as directed by the Engineer.
- No deductions in concrete shall be made for 2-inch crossbars.
- Steel strap and pipe for crossbars are included in the structural steel grate quantities.
- Slope catch basin floors 10:1 from all directions toward outlet pipe. If basin is used as a junction, shape flow line(s) to outlet pipe, and provide a 10:1 slope to flow line(s).
- Pipe penetration may be placed in any wall. Additional pipe penetrations limited to 24" max interior diameter pipe size.
- NPS = Nominal Pipe Size designator. See ASTM A53.
- See detail DS-27 for details if connecting to HDPE pipe.
- Contractor to verify "H" values as approved by the Engineer.



PLAN



SECTION A-A



DETAIL C